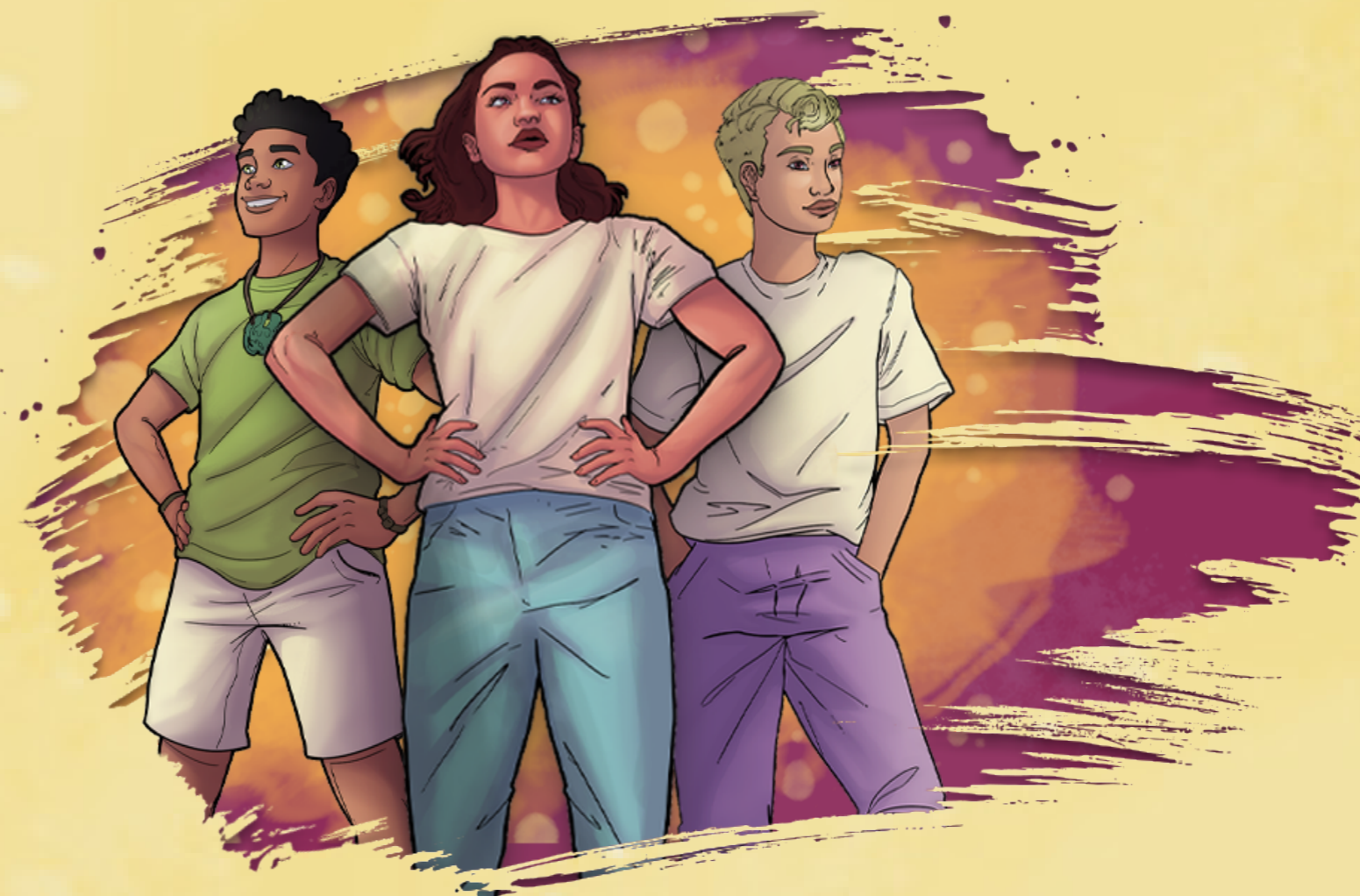


# Nau mai Haere mai, Kōrero mai

Ahakoā he nui, he iti rānei tō raruraru, ka taea e te Kaitiaki Mana Tangata te whakarite.

Mēnā he tamaiti, he taiohi rānei koe, he pakeke pono rānei koe kei te whakapā mai ki te kōrero mōna, anei te huarahi



**Kei te haumarū koe?**  
Waea koreutu ki 0508 326 459,  
ki ngā Pirihimana rānei i 111



**Kei te māharahara koe**  
mō tētahi mahi a Oranga  
Tamariki, a tētahi o ana  
kaimahi rānei?



**Waea mai**  
ki 0800 184 184,  
karere kuputuhi rānei ki 8951  
īmēra ki [info@ombudsman.parliament.nz](mailto:info@ombudsman.parliament.nz)



**Ka whakarongo mātou,**  
me te kōrero ki a koe mō te  
āhua o tā mātou āwhina



**Ka āwhina mātou,**  
ka kimihia rānei te hunga  
ka taea te āwhina